

motorsport range CAR6849D09PE

4-piston radial mount caliper

Part numbers and handing

Mount hole spacing	Position	Part number
120mm	LH leading	CAR6849D09PELL-RT
	RH trailing	
	RH leading	CAR6849D09PELT-RL
	LH trailing	



Replacement parts

Item	Part number
Seals 1.375" (34.9mm) (x4)	SES3500X751
Pistons 1.375" (34.9mm) (x4)	PSV3530X251E
AKB Springs 1.375" (34.9mm) (x4)	SSC3435X609
Bleed screw	FSB0080X008
Abutment plate LH (x2)	ASC4489X549L
Abutment plate RH (x2)	ASC4489X549R
Abutment plate screw (x4)	BSB0080X199
Pad retainer bridge (x2)	PSC4468X730C
Pad retainer bolts (x4)	BSS4441X701
Bridge pipe	PSC3468X661

Applications

Trans-Am, GT1, Historic.

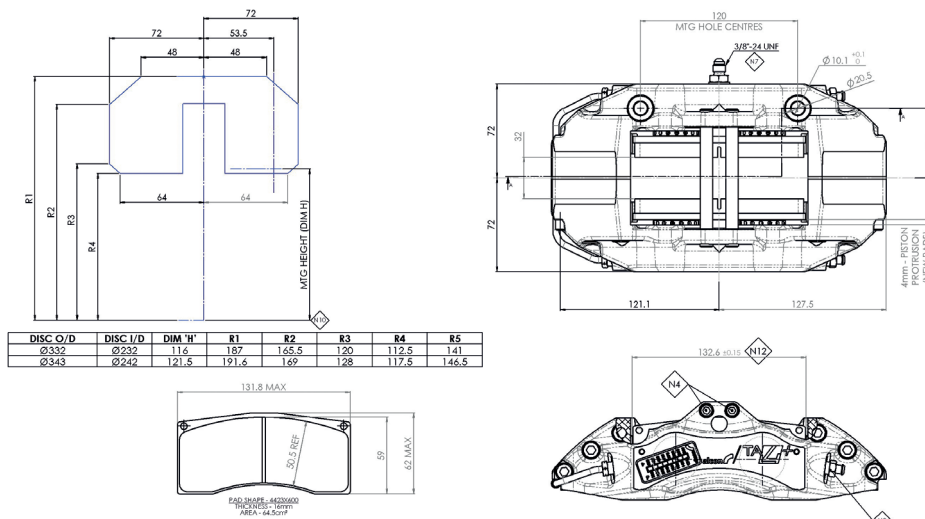
Key features and benefits

- Forged aerospace aluminum provides high strength and light weight.
- Ventilated stainless steel pistons with low friction coating.
- Hard steel wear plates.
- Bolted pad retainer to increase stiffness.

Specifications

- Rotor diameter range 13" - 13.5" (ø332 - 343mm).
- Rotor thickness range 1.25" (32mm).
- Fluid inlet 3/8" - 24 UNF (-3)
- Dry weight 5.58lb (2.54kg)
- Alcon pad reference: 4441, 16mm thick

Installation dimensions



Pro-System Brakes | Alcon Specialist Brakes & Clutches

Call: + 1 (704) 799 8100

Email: sales@prosystembrakes.com

Visit: www.ProSystemBrakes.com